



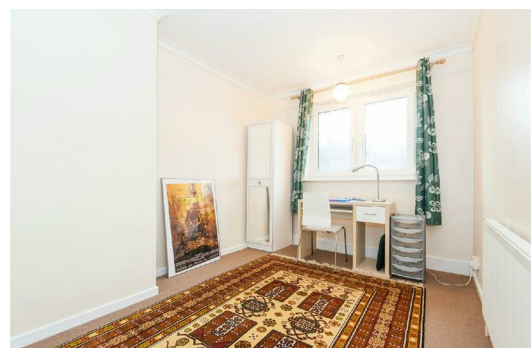
Donegal House, London, , E1 5QR £2,400 PCM

Elms Estates are delighted to be offering to the market To Let this Three Bedroom Maisonette arranged over the Ground and First Floor with a Private Garden.

Donegal House is located directly off of Cambridge Heath Road and within a short walk of either Whitechapel (District and Hammersmith & City lines) Tube Station or Bethnal Green (Central Line) Tube Station and having multiple bus routes in to the City, West End and beyond.

In addition to the fantastic transport links, Donegal is situated just up the road from Whitechapel's famous Street Market with a easy access to local amenities, with Bethnal Green Gardens, a Sainsbury's and Gym just a few minutes walk away.

For more information or to arrange a viewing please do not hesitate to call in and speak with one of our Property Consultants. Early viewing is recommended, available to move in to from 13 December 2021.



Lounge
16'1" x 11'2" (4.90m x 3.40m)

Kitchen
8'10" x 11'2" (2.69m x 3.40m)

Bedroom 1
14'5" x 8'10" (4.40 x 2.70)

Bedroom 2
14'1" x 8'10" (4.30 x 2.70)

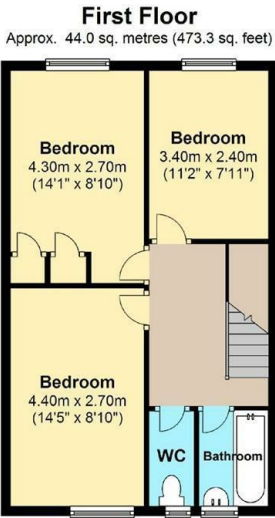
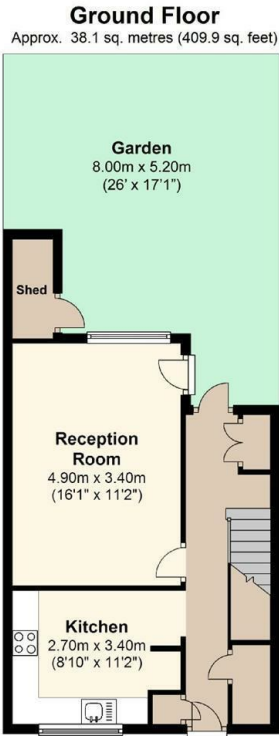
Bedroom 3
11'2" x 7'11" (3.40m x 2.41m)

Bathroom

WC

Garden

Exterior



Total area: approx. 82.1 sq. metres (883.2 sq. feet)
For illustration purposes only - not to scale

Energy Efficiency Rating			Environmental Impact (CO ₂) Rating		
	Current	Potential		Current	Potential
Very energy efficient - lower running costs			Very environmentally friendly - lower CO ₂ emissions		
(92 plus) A			(92 plus) A		
(81-91) B			(81-91) B		
(69-80) C			(69-80) C		
(55-68) D			(55-68) D		
(39-54) E			(39-54) E		
(21-38) F			(21-38) F		
(1-20) G			(1-20) G		
Not energy efficient - higher running costs			Not environmentally friendly - higher CO ₂ emissions		
England & Wales	EU Directive 2002/91/EC		England & Wales	EU Directive 2002/91/EC	